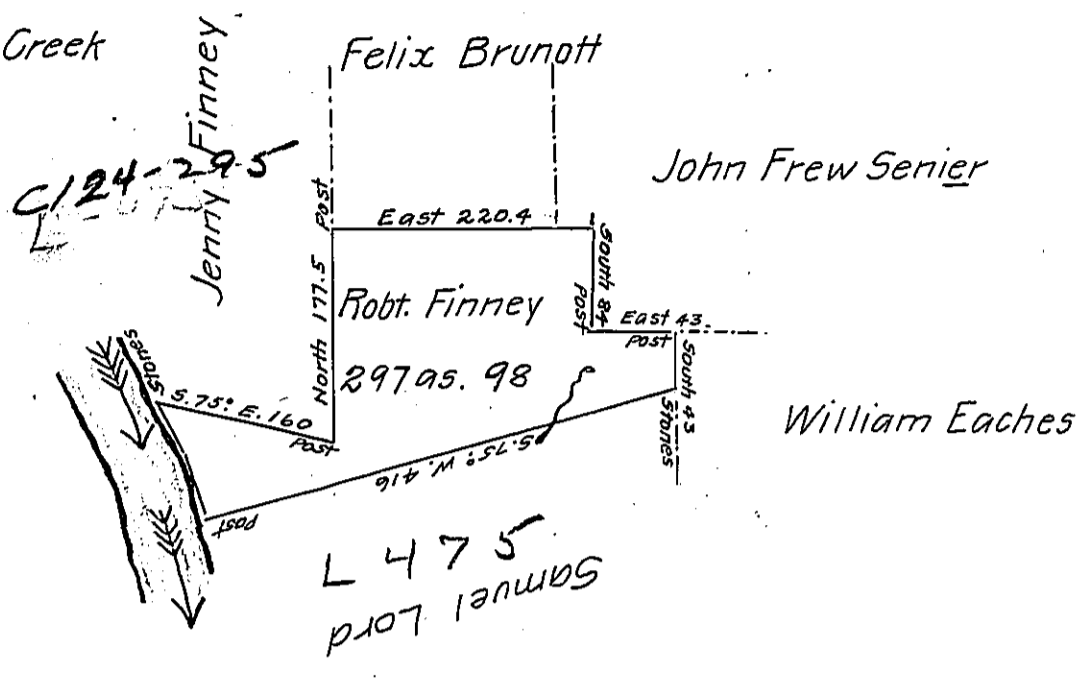


Courses up French Creek
beginning at a post.
N. 19. W. 64
N. 34 1/4 W. 46 stones



In pursuance of a Warrant for 300 as. Acres of land dated the 19th. day of May 1801, was surveyed the 13th. day of November 1801 for Robert Finney the above described Tract of land containing 297 acres 98 perches and allowance of six per cent for Roads &c. Situate in Mead Township Crawford County. This survey was returned as originally surveyed by me with an interference of about 26 as. the parties have since agreed to have it returned in the above manner. I therefore hope the Surveyor General will be pleased to accept the same.

William Mc Arthur D. Sur.

Samuel Cochran Esquire
Surveyor General

IN TESTIMONY that the above is a copy of the original remaining on file in the Department of Internal Affairs of Pennsylvania, made conformably to an Act of Assembly approved the 16th day of February, 1833, I have hereunto set my Hand and caused the Seal of said Department to be affixed at Harrisburg, this second day of June 1906

Isaac P. Brown
Secretary of Internal Affairs.